

# CORNERSTONE COMMUNITY CHURCH

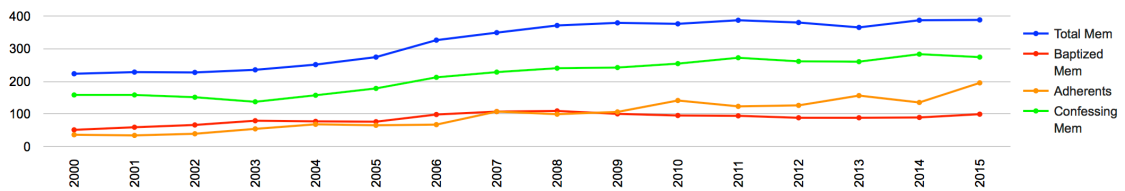
Chowchilla California

## Stats 2000-2015

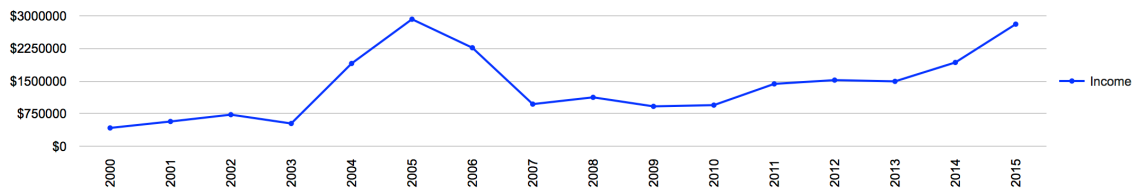
Synod:  Classis:  Church:

Year	Total Mem	Inactive Mem	Baptized Mem	Adherents	Confessing Mem	Income	Adult Baptisms	Infant Baptisms	Confessions	Worship Attendance
2000	223	14	51	36	158	420,707	1	5	12	170
2001	228	11	59	34	158	569,114	2	6	2	180
2002	227	10	66	39	151	726,119	2	5	4	185
2003	235	19	79	54	137	523,142	0	2	0	185
2004	251	17	77	68	157	1,903,007	6	2	17	198
2005	274	20	76	65	178	2,920,376	5	7	30	230
2006	326	16	98	67	212	2,264,814	2	6	3	330
2007	349	14	107	107	228	968,623	2	5	6	350
2008	371	22	109	99	240	1,124,446	1	3	8	385
2009	379	37	100	106	242	917,012	0	4	1	390
2010	376	27	95	141	254	945,296	0	2	4	402
2011	387	21	94	123	272	1,433,610	9	7	23	395
2012	380	31	88	126	261	1,520,495	2	3	15	400
2013	365	17	88	156	260	1,491,602	3	3	3	440
2014	387	15	89	135	283	1,926,512	3	7	7	422
2015	388	15	99	195	274	2,806,907	2	8	4	427

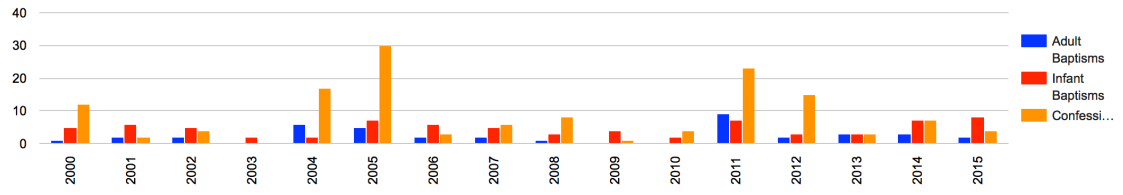
### Membership



### Income



## Baptisms & Received on Confession



## Average Worship Attendance

